

*W*ith over 3,000 square feet, the Balboa Bay is a large home with stately features, yet its clever floor plan balances elegant ambience with easy living. The domed rotunda ensures that every entrance is grand, while the screened loggia on the back invites casual gatherings and quiet reflection.

the Balboa Bay

Cypress Pointe
at Brunswick Forest



Since 1989, Kent Homes has specialized in building homes for active adults in well-established communities in coastal North Carolina. They offer innovative home designs built at affordable prices, with the highest of standards. Combining this with a very customer-focused organization insures a home and home-building process that results in rave reviews from their clients.

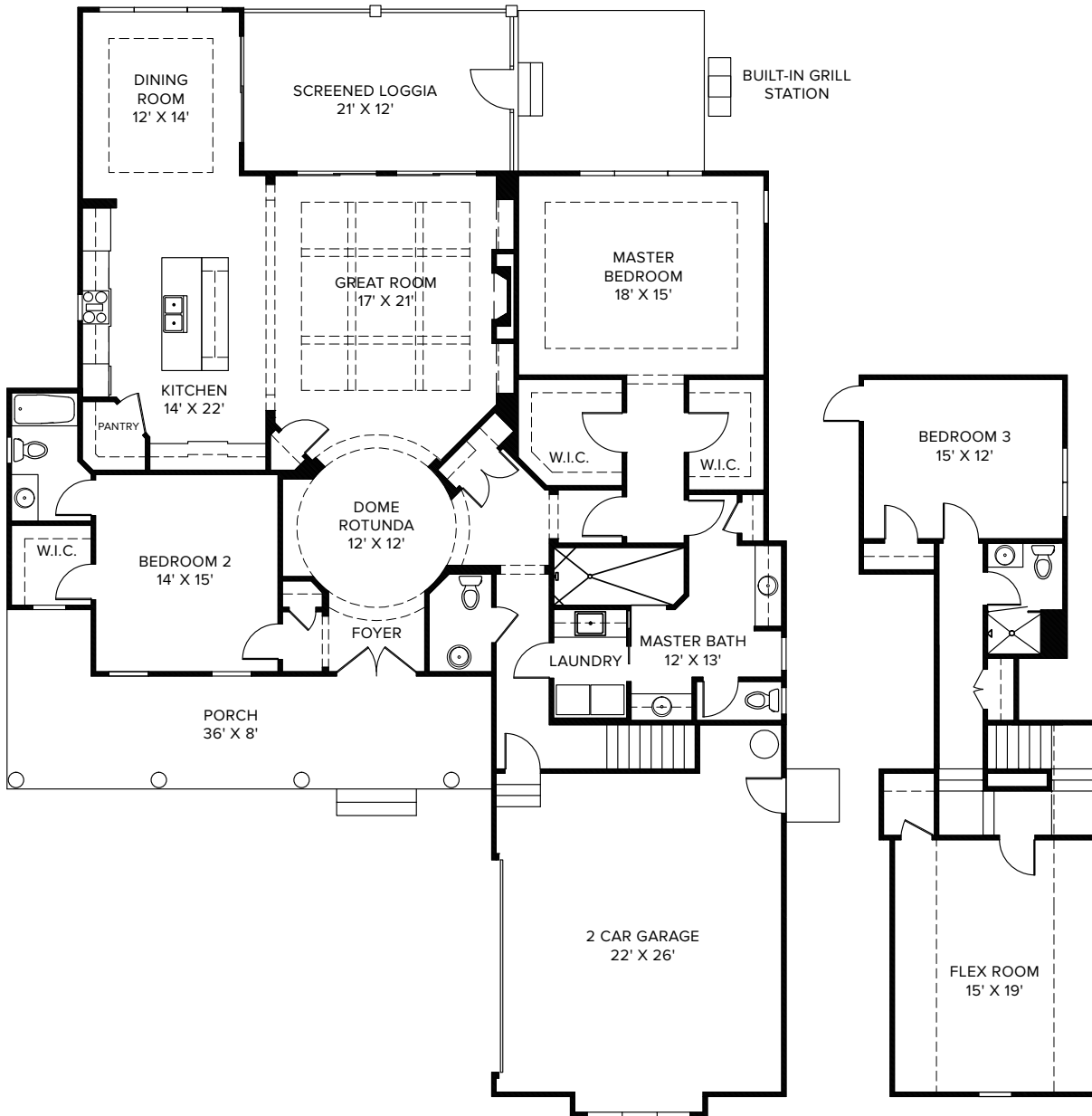
KENT *homes*
A SMARTER WAY TO A LUXURY HOME

what I love about this home:

the Balboa Bay

3,101 sq. ft.

Floor Plan



what I love about this home:

Cypress Pointe



BRUNSWICK FOREST
Coastal By Nature

888.371.2434 | BrunswickForest.com

Nestled Near Coastal Wilmington, North Carolina



Obtain the Property Report required by Federal Law and read it before signing anything. No Federal agency has judged the merits or value, if any, of these properties. The features and amenities described and depicted herein are based upon current development plans, which are subject to change without notice. This is not an offer to sell or solicitation of offers to buy real estate in any jurisdiction where registration or advance qualification is required but not completed. © Brunswick Forest Realty, LLC Licensed NC Real Estate Brokerage Firm